

PROPRIETARY AND CONFIDENTIAL: THE INFORMATION CONTAINED IN THIS DRAWING IS THE SOLE PROPERTY OF LANCAIR INTERNATIONAL, INC. REPRODUCTION IN PART OR AS A WHOLE WITHOUT THE WRITTEN PERMISSION OF LANCAIR INTERNATIONAL, INC. IS PROHIBITED.

ZONE	REV.	DESCRIPTION	DATE	APP'D
ALL	A	INITIAL RELEASE.	5-11-05	BP

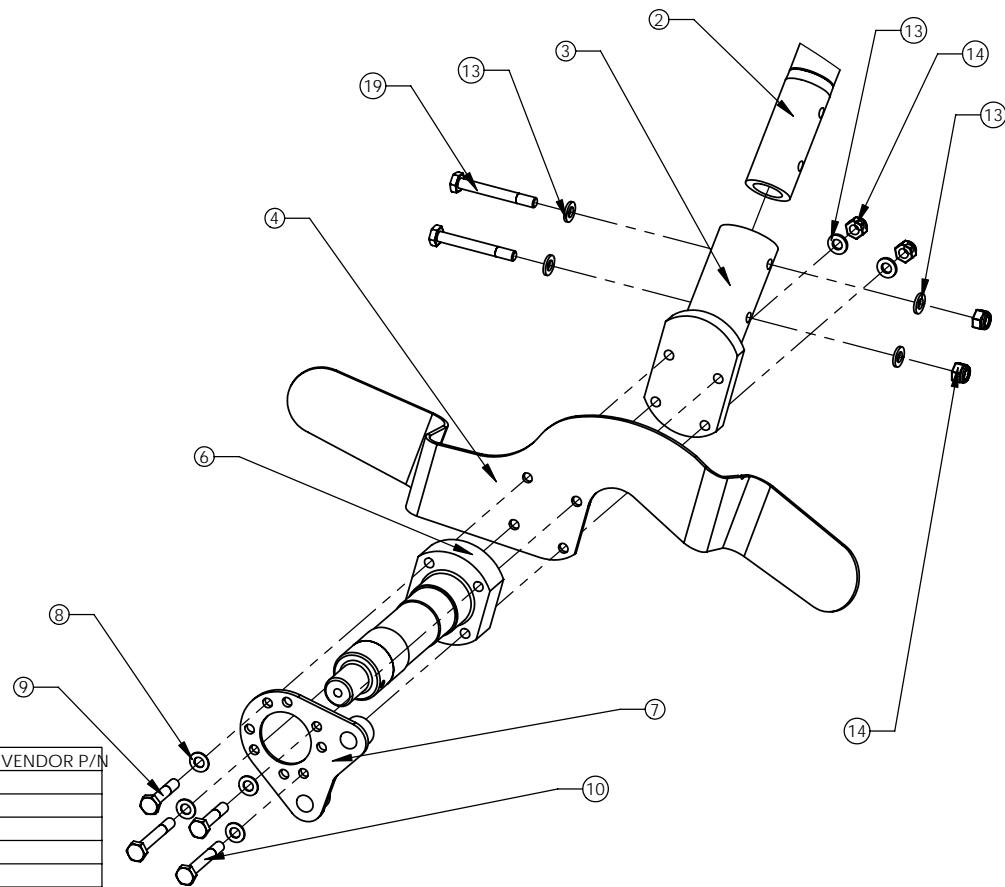
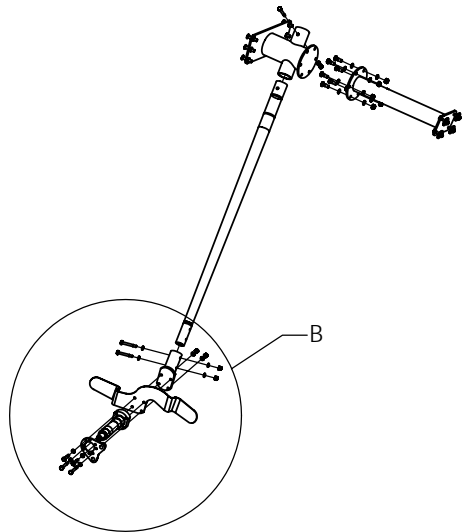
DETAIL A
SCALE 1 : 4

ITEM	QTY.	PART NO.	DESCRIPTION	MATERIAL	KCI / VENDOR P/N
1	1	7703-01B	Upper Leg Attach, MLG	SEE BOM	
2	1	7702B	Leg, Rear, Landing Gear,	STEEL, 4340	
3	1	7705-01C	Axel Mount, Left, MLG	SEE BOM	
4	1	209-0029A	Bracket, Left Wheel Pant	6061-T6 ALUMINUM, 18.15" X 5.75" X .090"	
5	1	7707B	Link, Upper Leg Attach Assy, MLG	SEE BOM	
6	1	121-0000A	Axel, FG		
7	1	Torque	Plate		
8	4	AN960-416L	Washer, Thin, 114		
9	6	AN4-12A	Bolt		
10	2	AN4-16A	Bolt		
11	6	MS24694-S154	Screw countersunk, 5/16, 3/4 grip		
12	1	AN4-22A	Bolt		
13	11	AN960-416	Washer		
14	9	AN365-428A	Nut, Nylock, .25-28		
15	6	AN5-6A	Bolt, 5/16, 5/16		
16	18	AN960-516	Washer, 5/16 x .064	STEEL, OD: .625; ID: .390, THK: .063"	
17	6	AN365-528A	Nut, Nylock, .313-28		
18	4	AN970-4	Large Area Washer, .25 ID X 1.125 OD		
19	2	AN4-20A	Bolt		

 INTERNATIONAL, INC. REDMOND, OR 97756 541-923-2244	PER ASME Y14 STANDARDS TOLERANCES: .XXX ±.005 .XX ±.01 .X ±.025 FRACTIONS ±1/32 ANGLES ±1°	DRAWN: B PHILLIPS ENGR: B PHILLIPS DATE: 5-11-05 DATE: 5-11-05 FINISH: DEBURR & REMOVE SHARP EDGES	VENDOR / VENDOR P/N: KCI PN/REF: FIRST USED ON: LEGACY FG	SHEET SIZE B SCALE 1:4 SHEET 1 OF 2
	MATERIAL: SEE BOM PART NUMBER REV TITLE Main Gear Leg Assy., Legacy FG			

CAD FILE: \\Lindbergh\data\Engr\Drawings\Legacy - Fixed Gear\Landing Gear\ Whole Leg Mockup with hardware

PROPRIETARY AND CONFIDENTIAL: THE INFORMATION CONTAINED IN THIS DRAWING IS THE SOLE PROPERTY OF LANCAIR INTERNATIONAL, INC. REPRODUCTION IN PART OR AS A WHOLE WITHOUT THE WRITTEN PERMISSION OF LANCAIR INTERNATIONAL, INC. IS PROHIBITED.



DETAIL B
SCALE 1 : 3

ITEM	QTY	PART NO.	DESCRIPTION	MATERIAL	KCI / VENDOR P/N
1	1	7703-01B	Upper Leg Attach, MLG	SEE BOM	
2	1	7702B	Leg, Rear, Landing Gear,	STEEL, 4340	
3	1	7705-01C	Axel Mount, Left, MLG	SEE BOM	
4	1	209-0029A	Bracket, Left Wheel Pant	6061-T6 ALUMINUM, 18.15" X 5.75" X .090"	
5	1	7707B	Link, Upper Leg Attach Assy, MLG	SEE BOM	
6	1	121-0000A	Axel, FG		
7	1	Torque	Plate		
8	4	AN960-416L	Washer, Thin, 114		
9	6	AN4-12A	Bolt		
10	2	AN4-16A	Bolt		
11	6	MS24694-S154	Screw countersunk, 5/16, 3/4 grip		
12	1	AN4-22A	Bolt		
13	11	AN960-416	Washer		
14	9	AN365-428A	Nut, Nylock, .25-28		
15	6	AN5-6A	Bolt, 5/16, 5/16		
16	18	AN960-516	Washer, 5/16 x .064	STEEL, OD: .625, ID: .390, THK: .063"	
17	6	AN365-528A	Nut, Nylock, .313-28		
18	4	AN970-4	Large Area Washer, .25 ID X 1.125 OD		
19	2	AN4-20A	Bolt		

PART NUMBER	REV	TITLE	SHEET
			2 OF 2

CAD FILE: \\Lindbergh\data\Engn\Drawings\Legacy - Fixed Gear\Landing Gear\ Whole Leg Mockup with hardware